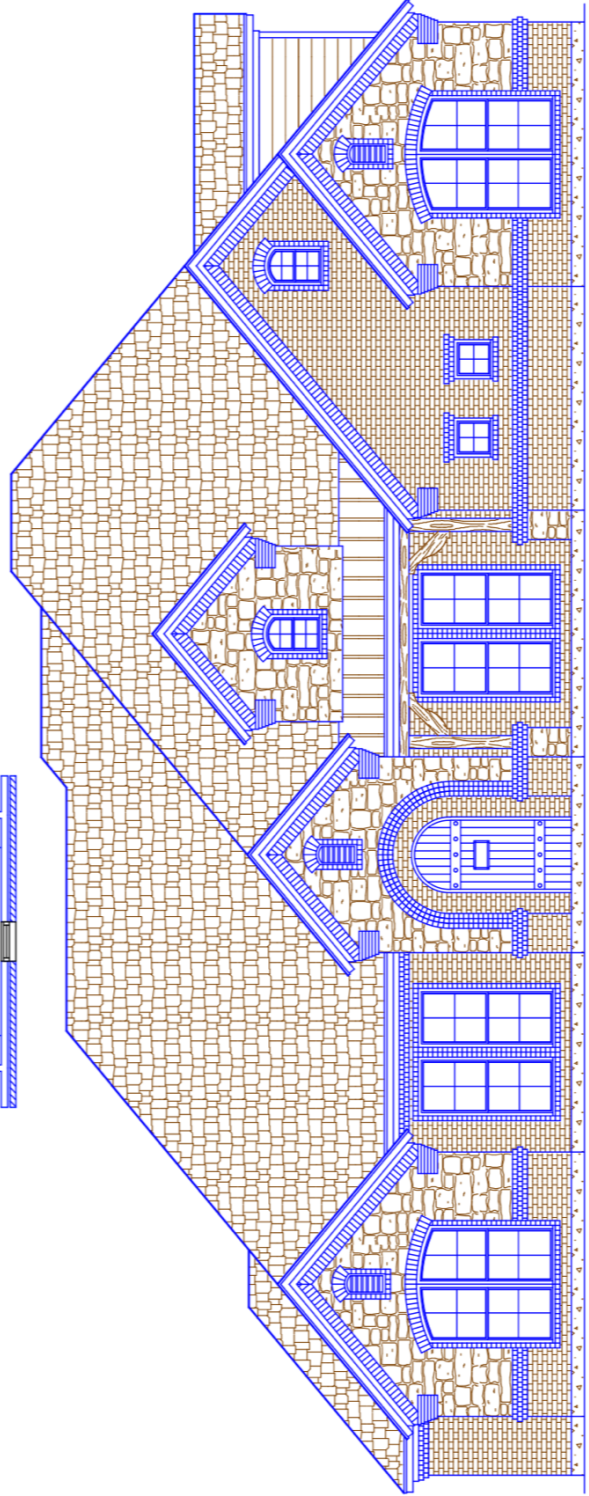


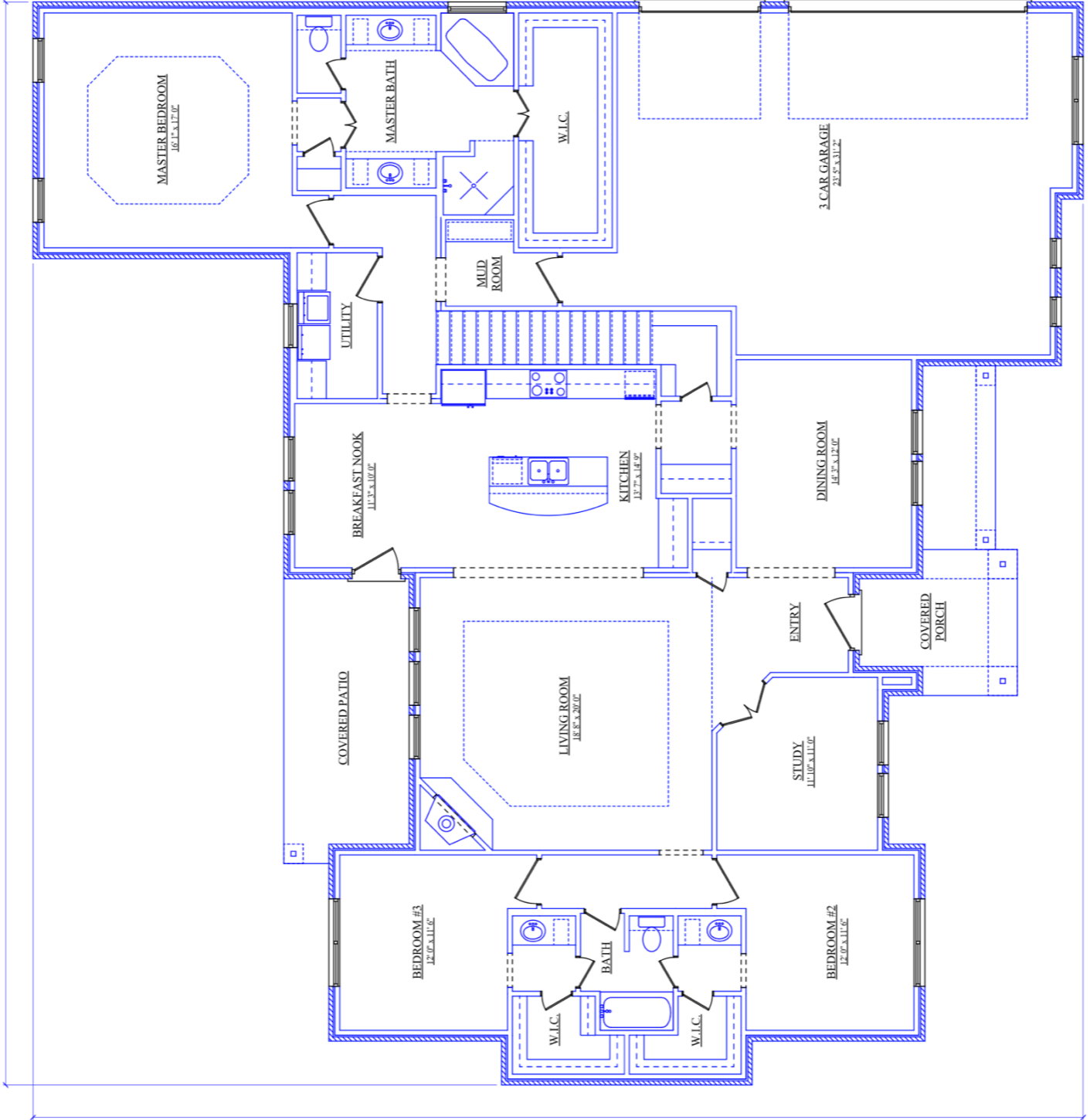
UPPER FLOOR PLAN



FRONT ELEVATION

AREA TOTALS

|                   |      |
|-------------------|------|
| LOWER LIVING      | 2725 |
| UPPER LIVING      | 688  |
| TOTAL LIVING AREA | 3413 |
| 3 CAR GARAGE      | 749  |
| COVERED PORCH     | 159  |
| COVERED PATIO     | 160  |
| TOTAL FOUNDATION  | 3793 |
| TOTAL UNDER ROOF  | 4481 |



| AREA TOTALS       |      |
|-------------------|------|
| LOWER LIVING      | 2725 |
| UPPER LIVING      | 688  |
| TOTAL LIVING AREA | 3413 |
| 3 CAR GARAGE      | 749  |
| COVERED PORCH     | 159  |
| COVERED PATIO     | 160  |
| TOTAL FOUNDATION  | 3793 |

FLOOR PLAN