

FRONT ELEVATION

AREA TOTALS

LOWER LIVING 2570

UPPER LIVING 369

TOTAL LIVING 2939

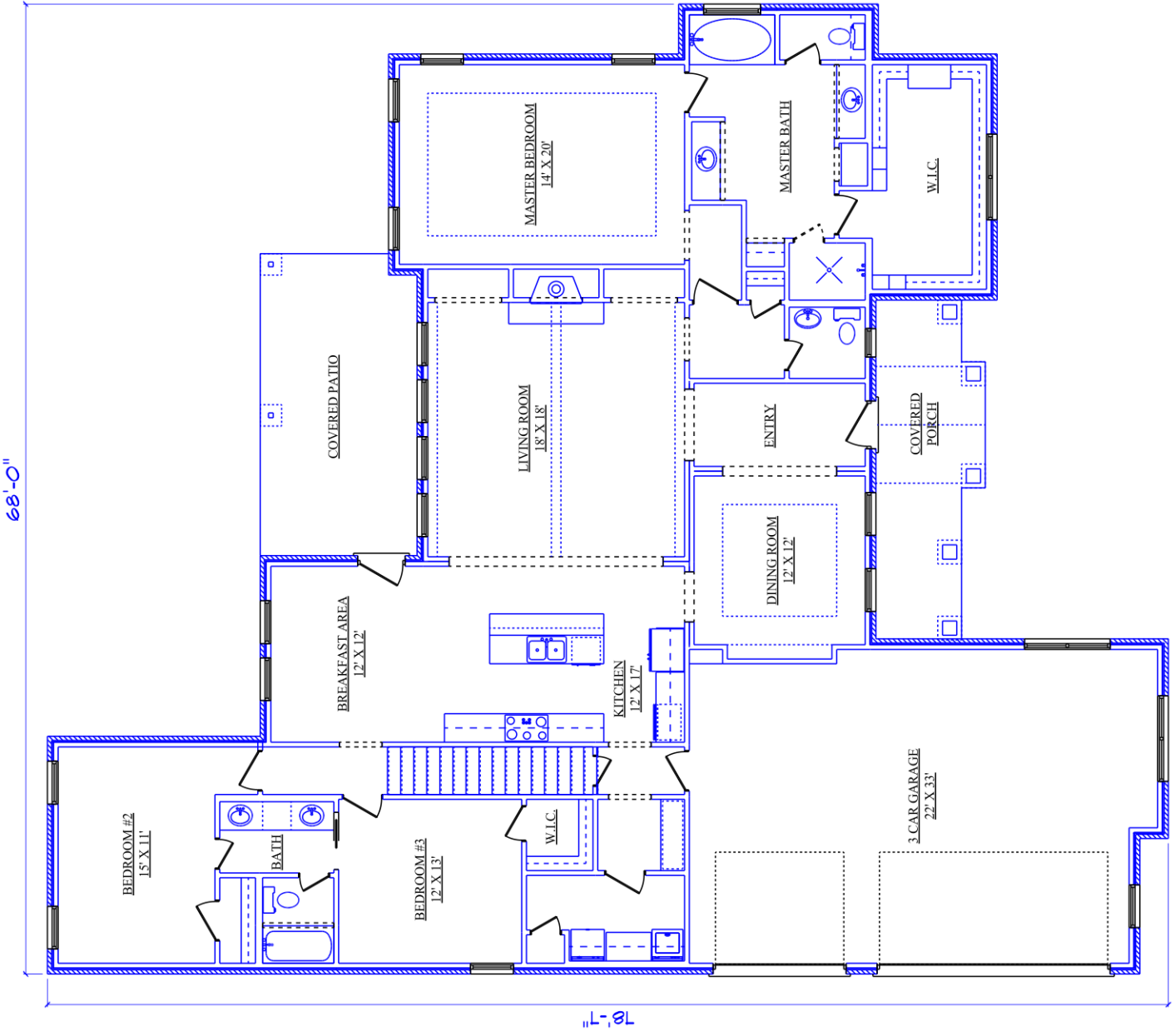
3 CAR GARAGE 765

COVERED PORCH 156

COVERED PATIO 230

TOTAL FOUNDATION 3721

TOTAL U/R 4090



68'-0"

70'-0"

2ND FLOOR PLAN

AREA TOTALS

LOWER LIVING	2570
UPPER LIVING	369
TOTAL LIVING	2939
3 CAR GARAGE	765
COVERED PORCH	156
COVERED PATIO	230
TOTAL FOUNDATION	3721
TOTAL U/R	4090

FLOOR PLAN