

AREA TOTALS

LOWER LIVING 2850

UPPER LIVING 930

TOTAL LIVING AREA 3780

2 CAR GARAGE 590

1 CAR GARAGE 290

COVERED PORCH 89

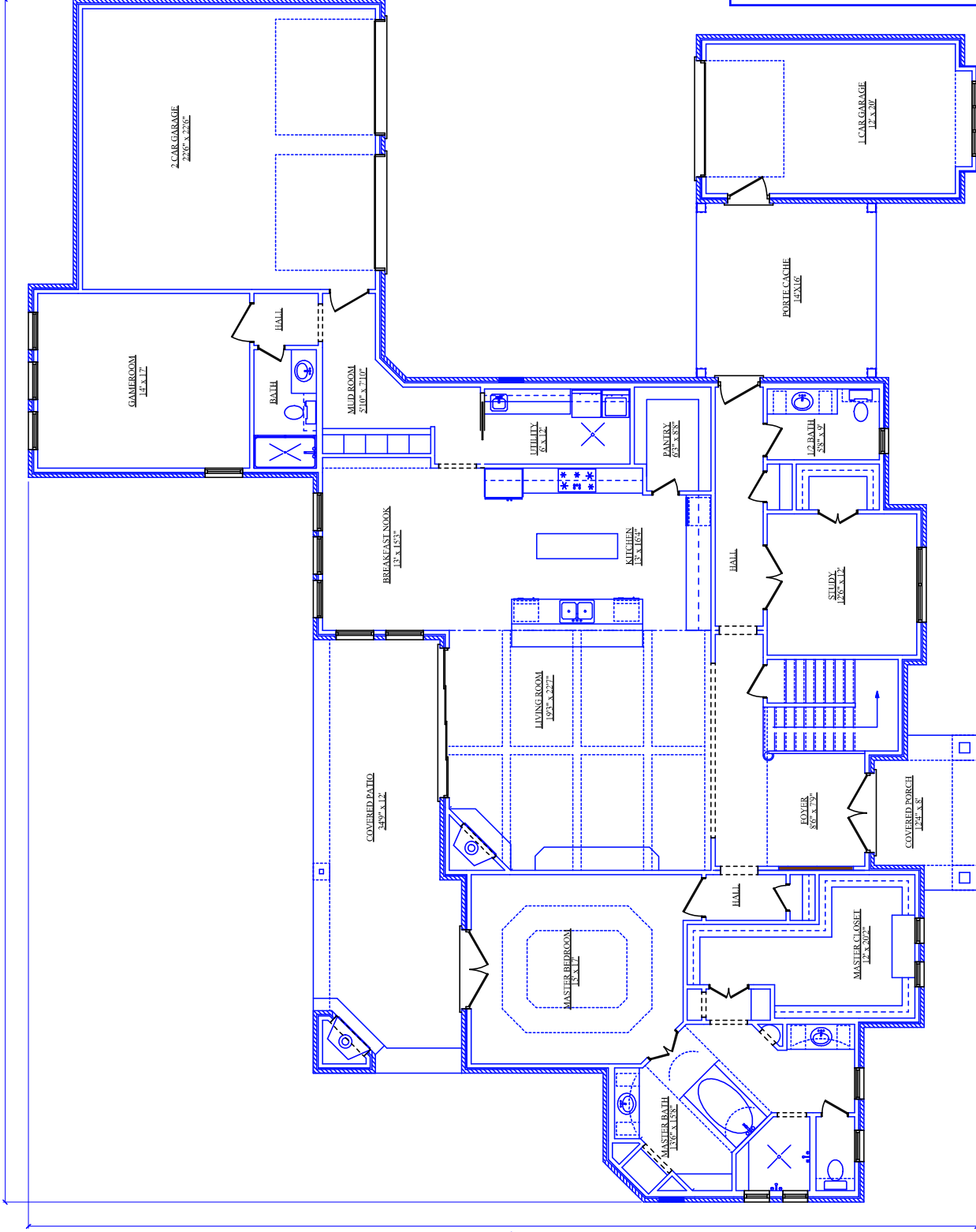
PORTE-CACHE 202

COVERED PATIO 380

TOTAL FOUNDATION 4401

TOTAL UNDER ROOF 5331

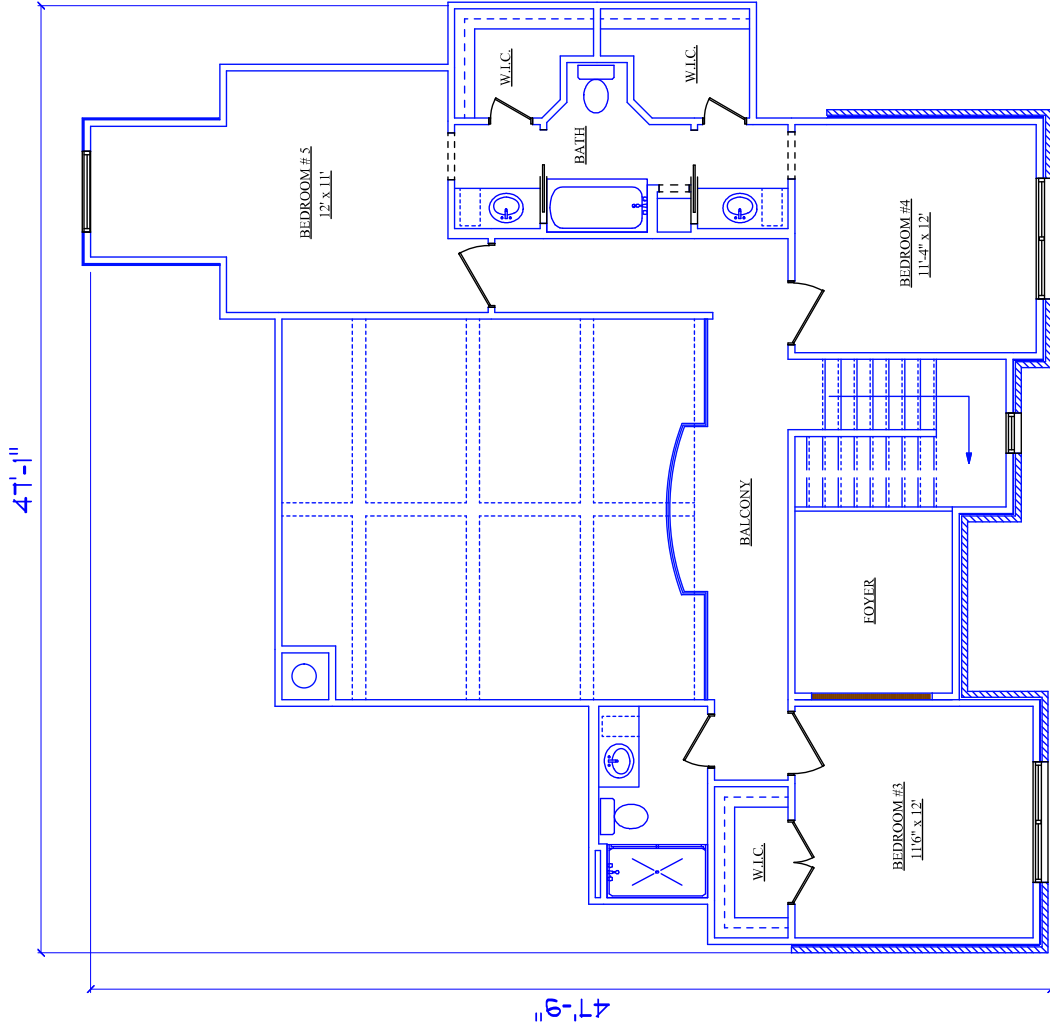
96'-5"



11'-6"

AREA TOTALS

- LOWER LIVING 2850
- UPPER LIVING 930
- TOTAL LIVING AREA 3780
- 2 CAR GARAGE 590
- 1 CAR GARAGE 290
- COVERED PORCH 89
- PORTE CÂCHE 202
- COVERED PATIO 380
- TOTAL FOUNDATION 4401
- TOTAL UNDER ROOF 5331



AREA TOTALS	
LOWER LIVING	2850
UPPER LIVING	930
TOTAL LIVING AREA	3780
2 CAR GARAGE	590
1 CAR GARAGE	290
COVERED PORCH	89
PORTE CACHE	202
COVERED PATIO	380
TOTAL FOUNDATION	4401
TOTAL UNDER ROOF	5331