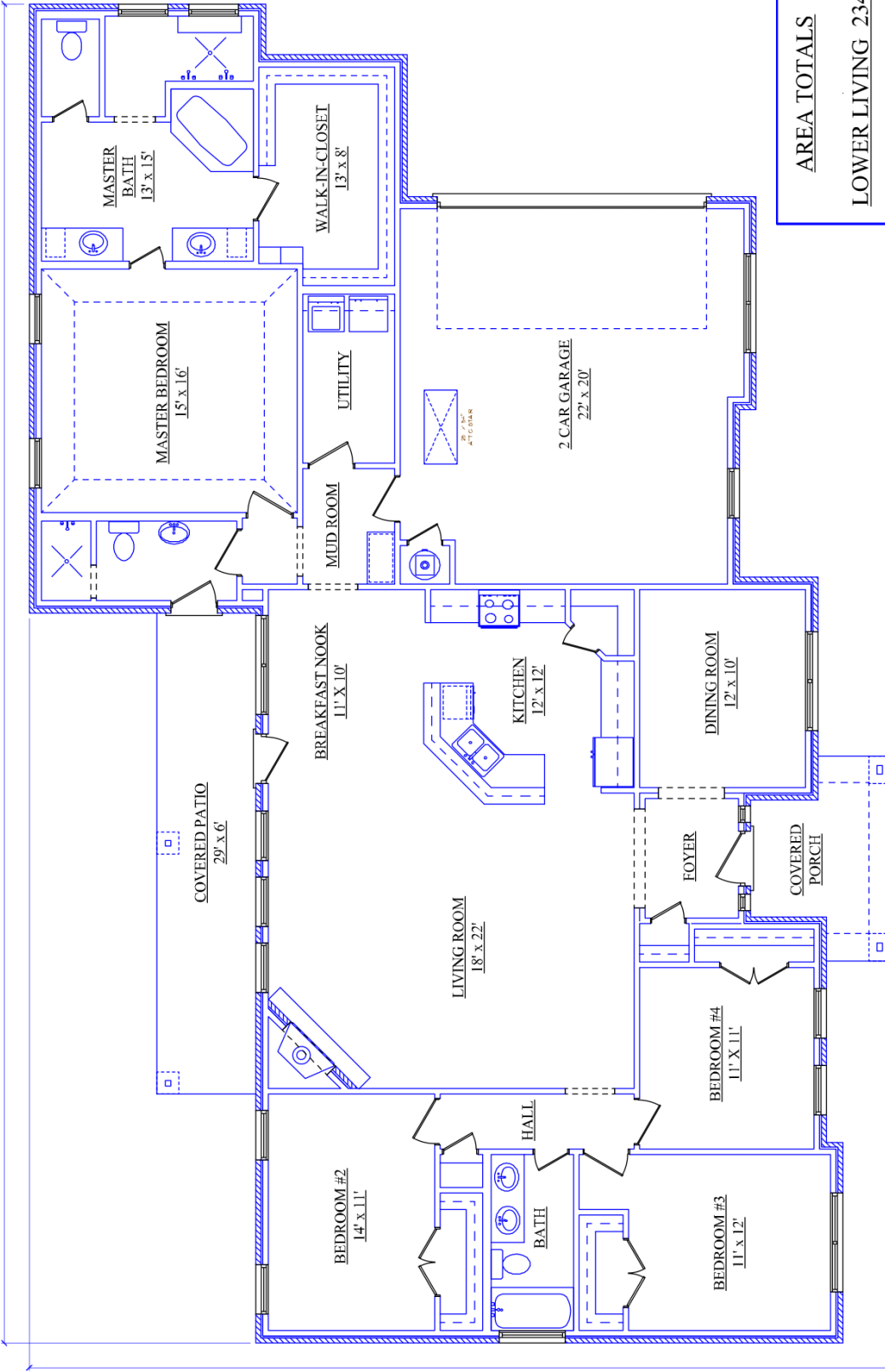


FRONT ELEVATION

| |
|--------------------------|
| <u>AREA TOTALS</u> |
| <u>LOWER LIVING 2347</u> |
| <u>2 CAR GARAGE 504</u> |
| <u>COVERED PORCH 82</u> |
| <u>COVERED PATIO 181</u> |
| <u>TOTAL SLAB 3114</u> |

81'-2"



52'-3"

| AREA TOTALS | |
|---------------|------|
| LOWER LIVING | 2347 |
| 2 CAR GARAGE | 504 |
| COVERED PORCH | 82 |
| COVERED PATIO | 181 |
| TOTAL SLAB | 3114 |