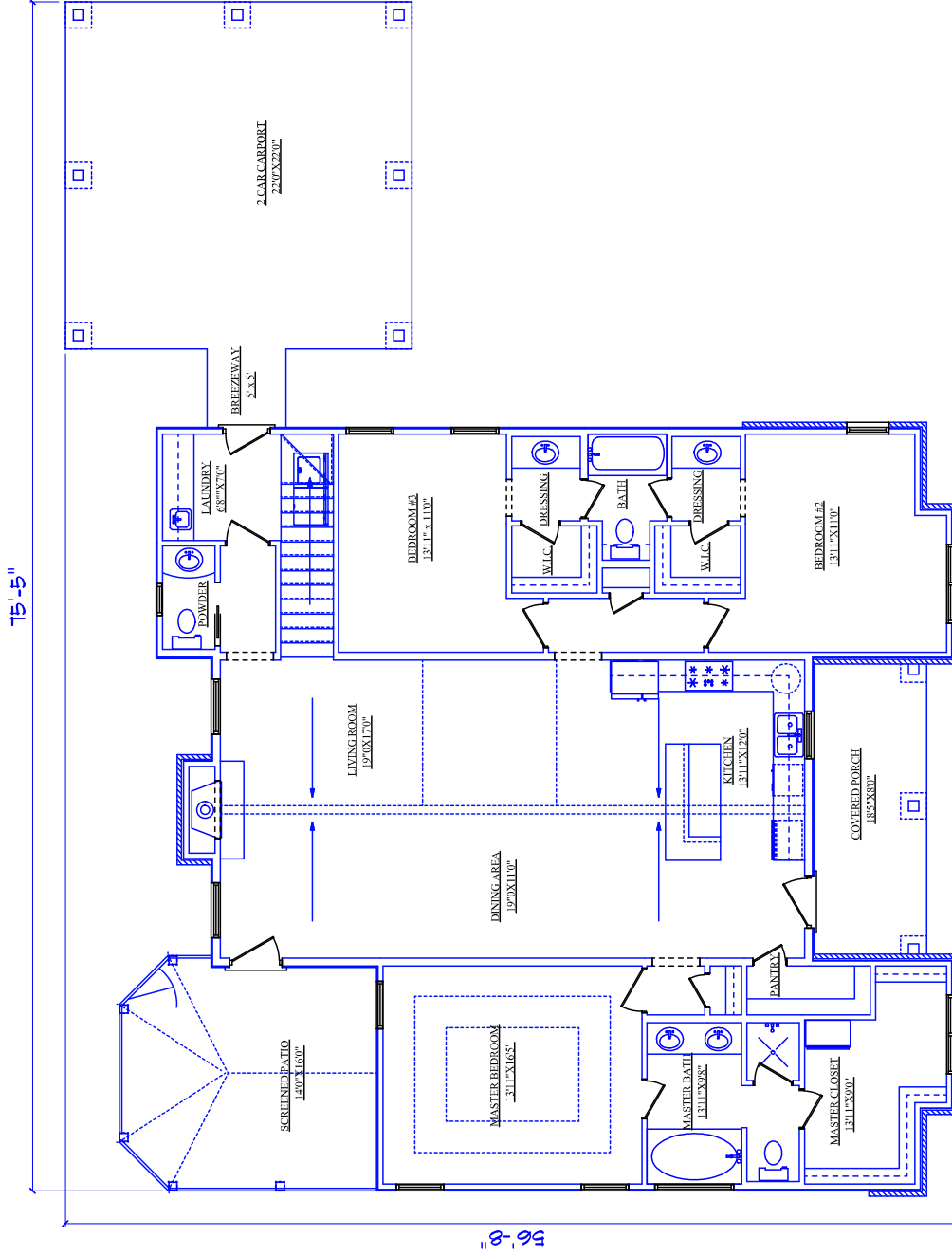


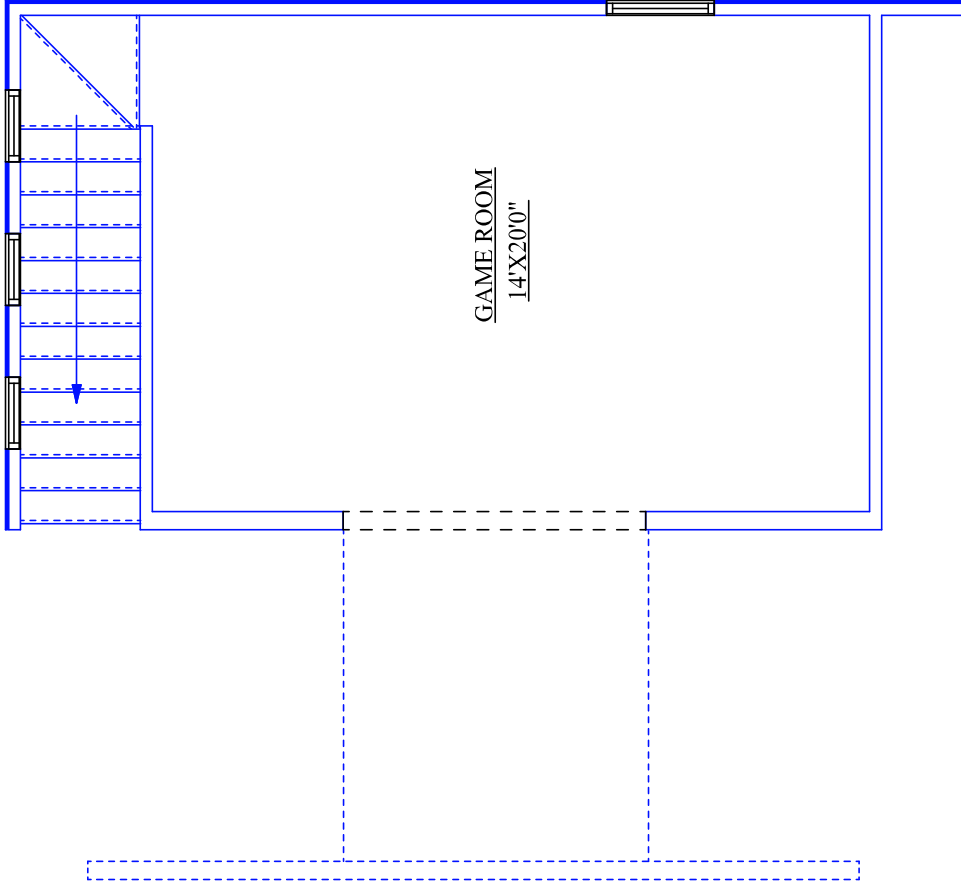
AREA TOTALS

| | |
|-------------------|------|
| LOWER LIVING AREA | 2010 |
| UPPER LIVING AREA | 300 |
| TOTAL LIVING | 2310 |
| COVERED PARKING | 509 |
| COVERED PORCH | 147 |
| SCREENED PATIO | 223 |
| TOTAL FOUNDATION | 2889 |
| TOTAL UNDER ROOF | 3189 |



AREA TOTALS

| | |
|-------------------|------|
| LOWER LIVING AREA | 2010 |
| UPPER LIVING AREA | 300 |
| TOTAL LIVING | 2310 |
| COVERED PARKING | 502 |
| COVERED PORCH | 147 |
| SCREENED PATIO | 223 |
| TOTAL FOUNDATION | 2882 |
| TOTAL UNDER ROOF | 3182 |



AREA TOTALS

LOWER LIVING AREA 2010

UPPER LIVING AREA 300

TOTAL LIVING 2310

COVERED PARKING 509

COVERED PORCH 147

SCREENED PATIO 223

TOTAL FOUNDATION 2889

TOTAL UNDER ROOF 3189